

The California College Guidance Initiative

CMP Alignment



CALIFORNIA
COLLEGES *.edu*

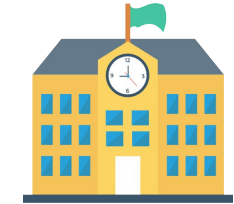


The Official College & Career Planning
Platform of the State of California

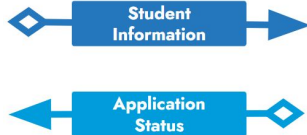


CALIFORNIA
COLLEGES.edu
DISCOVER. PLAN. LAUNCH.

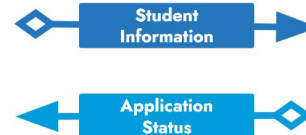
Connecting California's Systems



Partner District



Student launches applications
from CaliforniaColleges.edu





CALIFORNIA
COLLEGES.edu
DISCOVER. PLAN. LAUNCH.

Our Role in the Cradle-to-Career Data System

CaliforniaColleges.edu is a crucial component of the C2C Data System tools.

In 2021, the enactment of AB 132 outlined specific steps in order to implement the Cradle-to-Career (C2C) Data System and realize its objectives, including:

- ▶ Making CaliforniaColleges.edu tools and services **free to all California school districts serving 6-12th grade students**, with a goal of full participation by 2026.
- ▶ Designating CaliforniaColleges.edu as the **preferred starting point for all applications to California public colleges (CCC, CSU, UC), FAFSA, and CADAA.**

[Visit the Cradle-to-Career Website](#)





What is Technical Assistance?

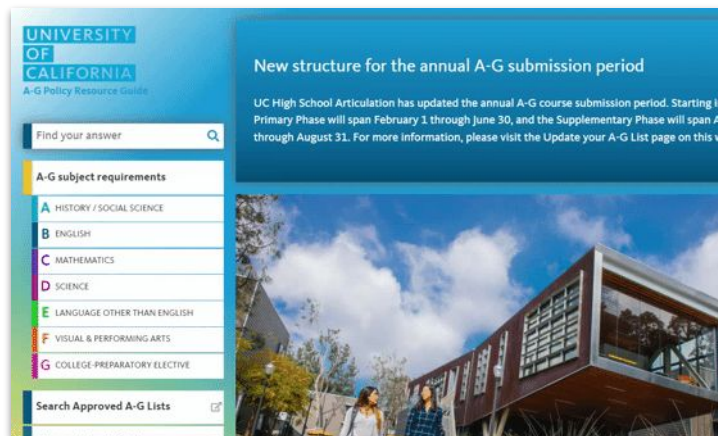
All public school districts in California are eligible to receive technical assistance from CCGI via the Regional CMP Convenings. Partner districts have access to ongoing support.

- ▶ **Technical Assistance** is the support provided to a District and/or School Course List Manager to ensure that accurate course data elements are stored and maintained in the UCOP Course Management Portal (CMP).
- ▶ **Course Data Elements** found in both the CMP and SIS for each A-G approved course include: School Year, A-G Subject Area designation, Transcript Abbreviation, and Local Course ID.
- ▶ **A-G Alignment** means that course data elements found in the CMP are an exact match to how those course data elements are stored in the district SIS. **A-G Alignment is the goal of technical assistance.**

The Course Management Portal

The Course Management Portal (CMP) is where all California districts and/or their schools manage their public-facing “A-G Course List.”

- ▶ The portal is managed by the University of California Office of the President (UCOP).
- ▶ Every institution that serves high school students in California needs to submit courses to the [Course Management Portal \(CMP\)](#) for review and approval by UC, if that course is to appear on the school’s A-G Course List.
- ▶ CMP course data serves as the “source of truth” for CSU and UC admissions processes.



Visit the CMP Website

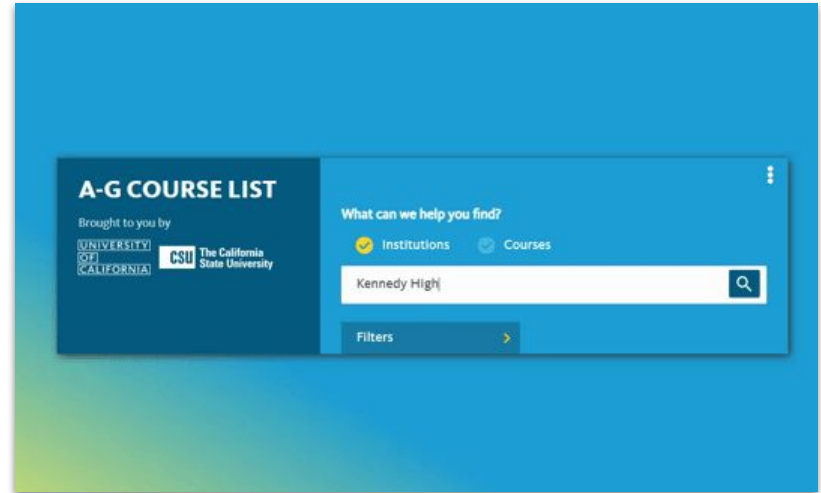
<https://hs-articulation.ucop.edu/agcmp#/login>



“a-g” Alignment Support

CaliforniaColleges.edu matches the course grade records provided by school districts against the Course Management Portal (CMP).

- ▶ The CMP course list is what determines which courses fulfill an “a-g” subject area.
- ▶ CaliforniaColleges.edu uses the official CMP course list for each school to **verify the transcript data** shared by district.
- ▶ CaliforniaColleges.edu helps educators identify and resolve issues with their CMP list that may impact eligibility for students:
 - ▬ CDS Code, Academic Year, A-G Subject Area, Transcript Abbreviation, Local Course Code





Joint vs. Centralized Permissions

| Type | Joint | Centralized |
|----------------------------|------------------------------------------------------------------------------------------------------------------------------------------------------------------------------------------------------------------------------------------------------------------------------------------------------------------|--------------------------------------------------------------------------------------------------------------------------------------------------------------------------------------------------------------------------------------------------------------------------------------------------------------------------------------------------|
| Schools | <ul style="list-style-type: none">▶ Course list manager can only manage their own A-G course lists.▶ Edit courses listed in white on their A-G list but can not edit district owned courses (listed in yellow).▶ Submit forwarded courses from users registered with the school. | <ul style="list-style-type: none">▶ Can write and forward courses to the district or school network reference list manager to submit to UC.▶ Can not edit/archive courses on their A-G list. |
| District or School Network | <ul style="list-style-type: none">▶ Can also write and submit courses on behalf of schools (district-owned courses).▶ Can only edit district-owned courses listed in yellow on their reference list.▶ Submit forwarded courses from a user registered with only the district. | <ul style="list-style-type: none">▶ Reference list managers can update and revise both school owned and district courses for all schools' A-G course lists.▶ Is primarily responsible for writing and submitting new courses on behalf of its schools.▶ Can add/remove approved courses associated with schools. |



What is A-G Misalignment?

A-G mismatch occurs when the way a course is listed in a district's Student Information System (SIS) doesn't align with the way it is listed in the CMP.



CAL STATE APPLY
UNIVERSITY
OF
CALIFORNIA





Impact of Misaligned Courses

CMP Misalignment inhibits successful electronic data transmission and may prevent CSU and UC campuses from recognizing A-G approved coursework.

Additionally, CMP mismatch:



**Increases workload
for counselors &
other educators
during application
season**



**Increases time
required for students
to complete their
CSU and UC
applications**



**Increases the
number of students
who do not get A-G
credit for courses
completed**



What A-G Misalignment Looks Like



| In SIS | In CMP |
|------------------------------------------------------------------------------------------------------------|-----------------------------------------------------------------------------------------|
| Transcript Abbreviation: Wrld Hist Local Course Code: 30125 | Transcript Abbreviation: World History Local Course Code: [None Listed] |
| Transcript Abbreviations: Algebra 2A and Algebra 2B Local Course Codes: 1004S1 and 1004S2 | Transcript Abbreviation: Algebra II Local Course Code: 1004 |
| Transcript Abbreviation: English II Local Course Code: 4538ENGL | Transcript Abbreviation: English II/4538ENGL Local Course Code: [None Listed] |





Reasons Mismatch Occurs

Why would Local Course ID or Transcript Abbreviation for a course be incorrect in the CMP?

- ▶ **Historical coursework** – Courses that have been listed in the CMP for many years - when transcript abbreviation and/or local course code were less emphasized and/or indicated as optional fields during the submission process – may be missing these elements or have outdated information.
- ▶ **Multiple course data elements in a single field** – Updates to the CMP in recent years make it clear that transcript abbreviation and local course code should be entered in separate fields. These updates also provide a simple method for separately entering multiple transcript abbreviations and/or local course codes associated to a single course. Courses that were approved in the CMP prior to these revisions, however, may have multiple data elements listed in one line, separated by a comma or a /.



Reasons Mismatch Occurs

Why would Local Course Code or Transcript Abbreviation for a course be inaccurate in the CMP?

- ▶ **Timing of Course Submission** – New courses may be submitted through the CMP for review and approval before they are added to the district's SIS. In these cases, the Transcript Abbreviation and the Local course code entered should be cross-checked against the SIS, once available, and updated as necessary. (This is an easy step to forget!)
- ▶ **Human error** – When exactness is required, Transcript Abbreviations leave much room for entry error. Common issues are extra “spaces”, special characters (/,&,;) and differing formats for numeric values (1 vs. I).

Questions?



CALIFORNIA
COLLEGES.*edu*



The Official College & Career Planning
Platform of the State of California



CALIFORNIA
COLLEGES.edu
DISCOVER. PLAN. LAUNCH.

Additional Resources



Get On-Demand Training on How to Use CaliforniaColleges.edu
californiacolleges.edu/#/virtual-trainings-partner-districts



Visit the Resource Hub
californiacolleges.edu/resourcehub/resources/



Find Answers to Common Questions on Our Help Page
californiacolleges.edu/resourcehub/help/



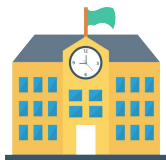
Check Out Our Videos on Vimeo
vimeo.com/californiacolleges/



Contact Us Directly for Assistance
californiacolleges.edu/#/contact-us

Not Yet a Partner?

We partner with public school districts that serve high school students.



To learn about bringing CaliforniaColleges.edu to your district, visit:
californiacolleges.edu/learnmore/partnership/



Share your interest and enthusiasm about CaliforniaColleges.edu with your district leader and/or partnership decision-maker.



When your district is ready to explore partnership, email us at:
CommunityEngagement@CaliforniaColleges.edu



Thanks! We'll See You Again Soon!